



Equinix Internet Business Exchange™ (IBX®) centers serve as core hubs for critical IP networks and Internet operations worldwide.

EQUINIX SWITCHED IP CONNECTIVITY



As the Internet brings more opportunities to your business, one of the biggest challenges facing your organization is to make sure you can scale the Internet connection efficiently in order to meet the growing demands of your users and applications. The mission critical nature of today's Internet based applications dictates that the network connections must remain high speed, dependable, and trouble free at all times.

Equinix Switched IP Connectivity service ("S-IPC") is an Internet access service designed to fulfill the bandwidth requirements of colocation customers looking for a one-stop-shop solution within the Equinix Internet Business Exchange™. S-IPC delivers a high performance as well as highly reliable connectivity solution with a suite of optional features customized for each Asia Pacific country's local market.

With Equinix S-IPC service, you will have a simple, scalable and cost-effective method to connect to the Internet within the Equinix IBX.

Key Challenges

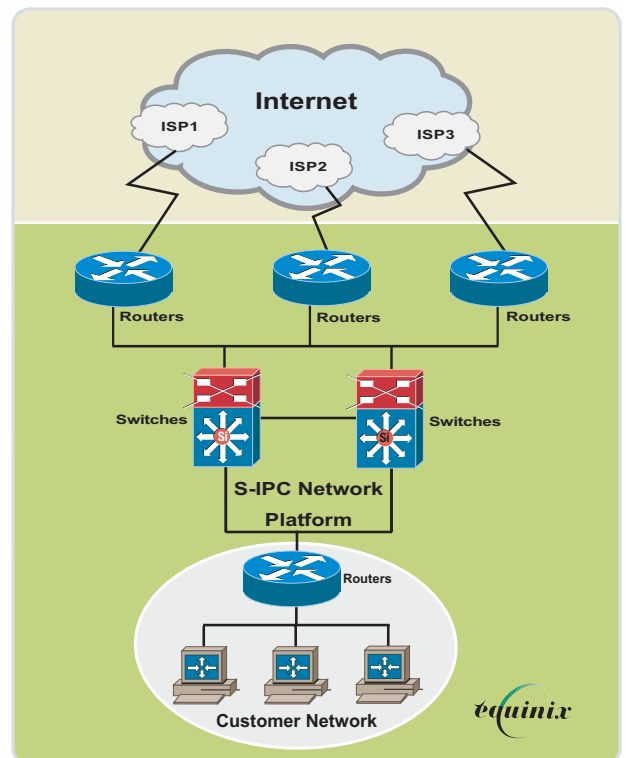
While IP services have become a standard offering from many ISPs and carriers, businesses are still battling several significant issues on a regular basis,

Reliability — Internet applications have now become mission critical in nature. With the traditional IP service offerings, businesses still have to invest a significant amount of capital and labor resources in order to build redundancy into their network infrastructure.

Performance — As the Internet has grown into a vast collection of interconnected networks all over the world, it becomes nearly impossible for business to rely on a single ISP to get the optimal connectivity to all the popular Internet destinations.

Scalability — Internet access must be scalable on multiple levels, which is not easily achieved from traditional IP services: To deal with unpredictable traffic; acquire or release bandwidth in a short span of time.

Cost — In order to meet the demands of its users and applications, organizations may need to have their own AS number, or deploy the expertise and resources to maintain a multi-homed setup; multinational corporations may have to deal with the complexities of evaluating local, unfamiliar ISP offerings and negotiating foreign contracts when expanding into Asia. All the above factors contribute additional costs and uncertainties to your budget.



EQUINIX-THE HOME OF THE INTERNET™

Service Description

Equinix S-IPC has the following main features,

- FastEthernet or Gigabit Ethernet Interface
- Option for BGP routing
- Primary/Secondary DNS
- IP address allocation
- Availability SLA
- Fixed or usage based billing

Business Value

Equinix S-IPC service enables customers to focus on their core business rather than worry about the complexity and challenges related to Internet connectivity.

With its multi-homed backbone connectivity, Equinix S-IPC offers multiple levels of network redundancy, on the physical layer, the transmission layer, and the IP layer. As a result, S-IPC is much more resilient and reliable against a variety of network faults, from fiber cuts to hardware device failure, compared to a single homed solution. Customers are assured that there is always an alternative path to the Internet.

Another benefit is that S-IPC provides customers the most optimal route to any given Internet destination. Customers are assured that S-IPC service always finds an alternative path to the Internet.

In the S-IPC multi-homed scenario, all the routing choices from different backbone networks are presented to the S-IPC customer directly, and the routing decision is always made based on the best path available to a certain destination. The wider selection of higher quality routes ensure S-IPC serves consistently high quality connectivity to its customers.

As with all other Equinix service offerings, Equinix provides a one-stop-shop solution with the consolidated provisioning, operation, and billing interface for a diverse range of data center services, as such S-IPC customers realize a faster time-to-market interval as well as the ability to react to unforeseen events.

Features	Benefits
Multi-homed connectivity	Multi-homing provides extra reliability as well as better network performance to S-IPC customers due to its diverse backbone network connectivity
Tier-1 backbone service providers	Carefully chosen Tier-1 backbone service providers enable S-IPC to provide optimal routing to any local, intra-Asia, as well as the rest of the Internet destinations.
Flexible billing methods	Fixed bandwidth, usage-based, and volume-based billing options are available, offering S-IPC customers the most cost effective billing plan for their particular application
7x24 pro-active support	Equinix Asia Pacific's Network Operations Center proactively monitors the network status 7x24, fixing most problems ahead of time
SLA	S-IPC service is backed up by a stringent commercial SLA throughout Equinix Asia Pacific countries.

If you would like to learn more about Equinix, please contact our regional sales offices or send an email to info-ap@ap.equinix.com and provide your name, title, location, and how we may contact you.

Australia Sales Office: +612.8337.2000

Hong Kong Sales Office: +852.2970.7788

Japan Sales Office: +81.3.5796.0461

Singapore Sales Office: +65.6723.8888

Equinix Asia Pacific Pte. Ltd.

Company Registration No.: 200210224C

28 Ayer Rajah Crescent #03-01 · Singapore 139959 · Singapore

TEL 65.6723.8888 · FAX 65.6820.2005 · URL www.equinix.com

